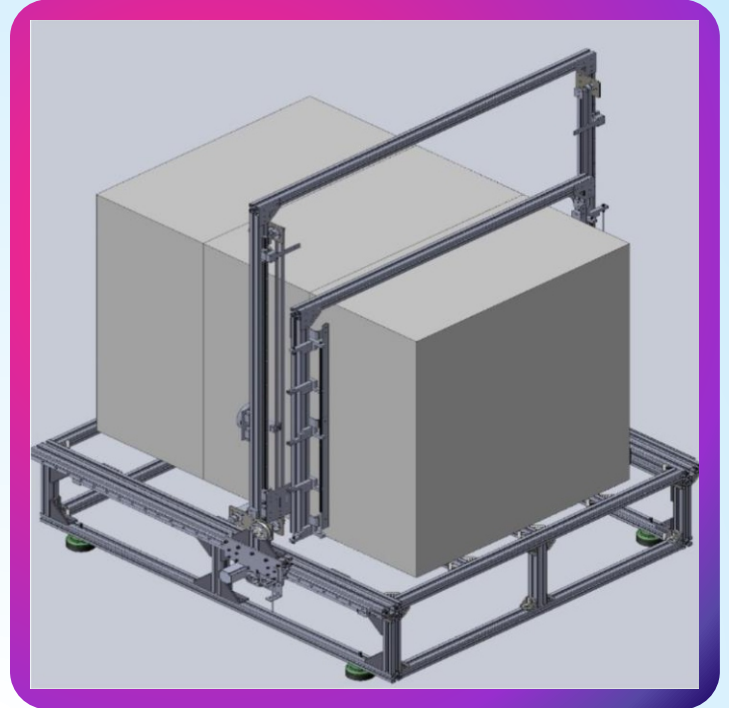
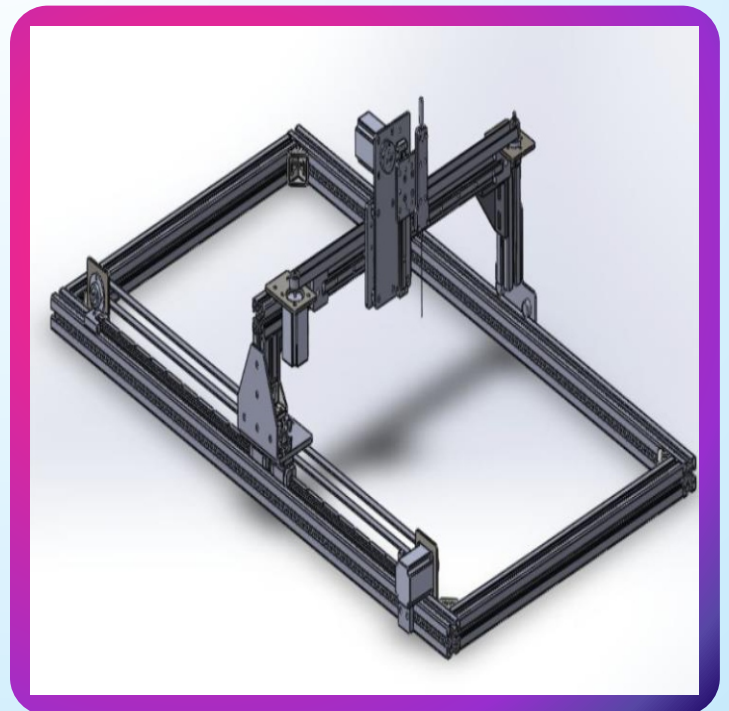
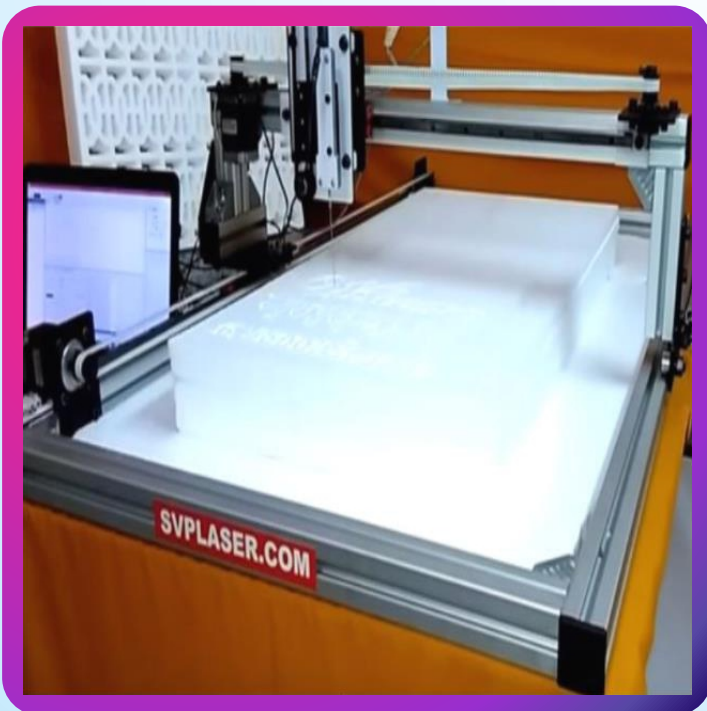


## MULTICNC HOT WIRE MACHINE - HD MODEL



## MULTICNC HOT KNIFE MACHINE



TO SEE THE MACHINE IN ACTION SCAN QR CODE



## MODELS

Model 1: 1.2x1.2x1.2M HD HOT WIRE

Model 2: 1.2x1.2x0.6M LITE HOT WIRE

Model 3: 1X0.5X0.1M HOT KNIFE

## BASIC PACKAGE

- SINGLE STRING/KNIFE WITH POWER SUPPLY
- CNC CONTROLLER SOFTWARE – MULTICNC
- CAM SOFTWARE - AUTOCAM2D

## MATERIAL CAN BE CUT

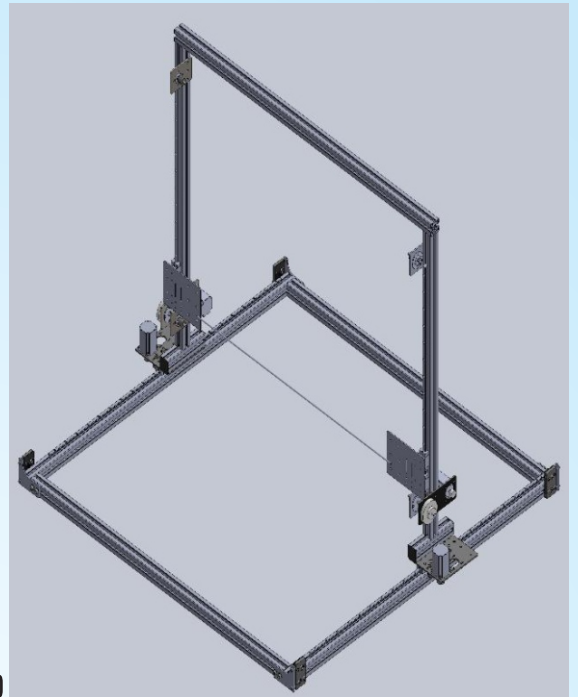
- EXPANDED POLYSTYRENE FOAM (EPS - THERMOCOL)
- EXPANDED POLYETHYLENE FOAM (EPE)
- EXTRUDED POLYSTYRENE FOAM (XPS)

## COMMERCIAL APPLICATIONS

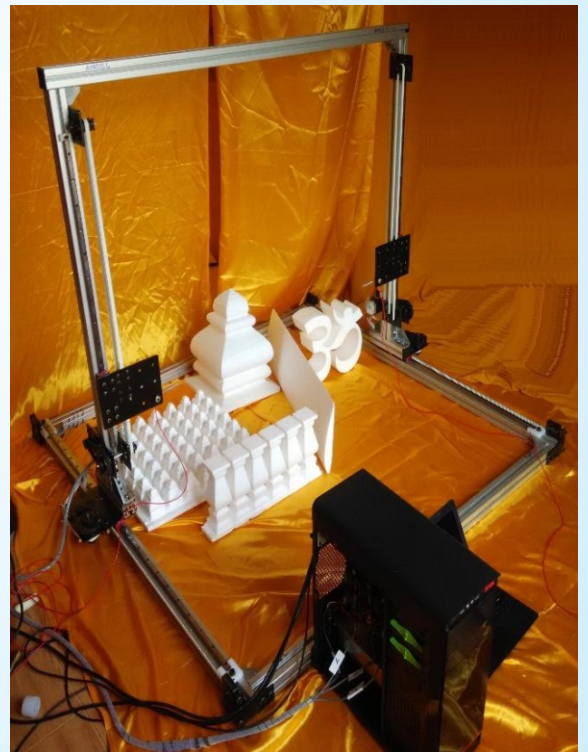
- PACKAGING
- INSULATION (PIPE SECTION, ROOF INSULATION...)
- EVENT DECORATIONS
- SIGN MAKING
- ARCHITECTURAL MODELS
- MOVIE SET, ADVERTISEMENT PROP
- LOST FOAM CASTING PATTERN MAKING

## OPTIONAL ACCESSORIES

- ANY SIZE OR STROKE CAN BE MADE
- MULTI STRING ATTACHMENT WITH SCALE (NOT AVAILABLE IN HOT WIRE LITE MODEL)
- ROTARY TURN TABLE (HORIZONTAL OR VERTICAL MOUNTING)
- 2 AXIS or INDEPENDENT 4 AXIS CUTTING (4 AXIS EXAMPLE - TAPER CUTTING)
- GANTRY ATTACHMENT FOR 3 AXIS CUTTING WITH HOT KNIFE AND ROUTER
- BOSCH DREMEL SPINDLE FOR 2D/3D CUTTING
- MULTIPLE HOT KNIFE FOR HIGHER PRODUCTIVITY
- ABRASIVE WIRE CUTTING FOR SOFT AND RIGID PUF
- ROTOSCOOP™ FOR PACKAGING



MULTICNC HOT WIRE LITE MODEL



# SAMPLE GALLERY



HOT WIRE LETTER CUTTING



GANESH DESIGN



HOT KNIFE LETTER CUTTING



DOMES ARRAY



BIG DOME



4 AND 8 SIDED PILLAR



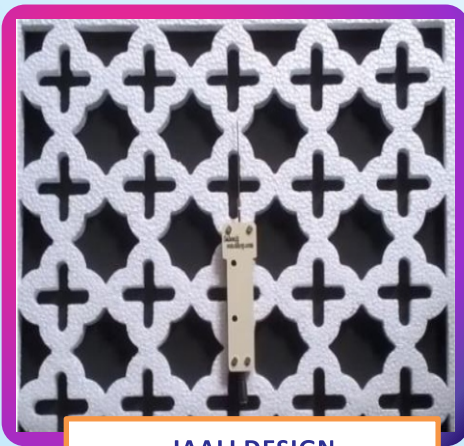
PILLAR ARRAY



PIPE SECTION



CORNER PATTI



JAALI DESIGN



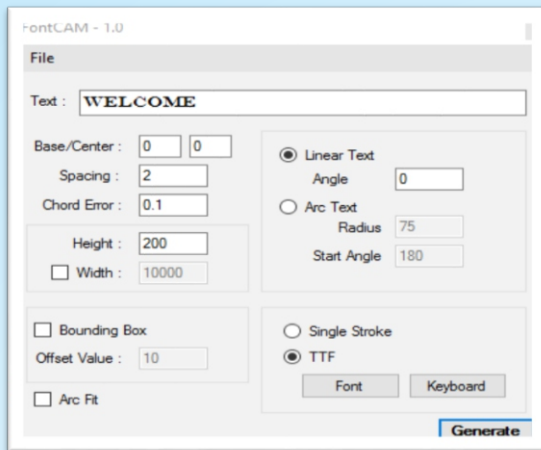
AERO FOILS



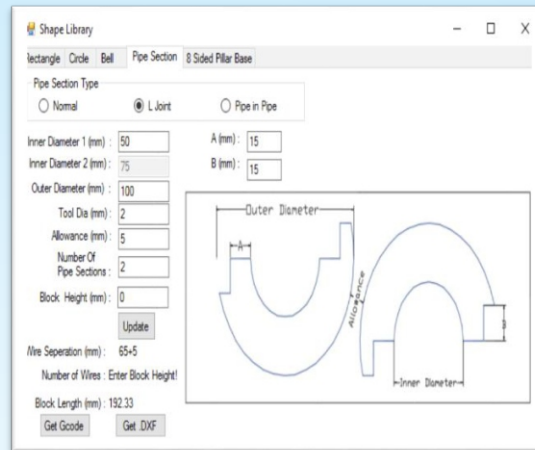
CURSIVE LETTER CUTTING

# AUTO CAM 2D

## FontCAM



## PIPE SECTION



## TECHNICAL DATA

DESCRIPTION	SPECIFICATION
Cutting size	Up to 8'x4' or custom size on request
Cutting speed	1000 mm/min
Maximum speed	2000 mm/min
CAM software	AutoCAM2D
CNC control software	MultiCNC
Input power	220v/50Hz single phase
Power consumption	Min 500 watt (Single wire/Knife), max 2000 watt (Multiple wire)
NiCr power source	36v AC Transformer with rated dimmer
Controller	2 axis/ 3 axis/4 axis simultaneous control system
Resolution( XY)	0.1 mm
Axis driving motors	2.8 A, 1.8 Nm stepper motor
Drive system	X-axis - rack & pinion (HD model) / timing belt (lite model) , Y-axis - timing belt
No. of axis	min 2, max 4
No. of NiCr string	10 (more string on request)

**WARRANTY:** One year warranty on parts against manufacturing defects

Visit our factory to see a live demo of the machine  
**Contact**

### DESIGN OFFICE:

26/27, Ganapathy Nagar 2nd Street,  
Ekkattuthangal, Chennai-600 032.

Phone: 9840727660

Email: [sales@svplaser.com](mailto:sales@svplaser.com), Website: [www.svplaser.com](http://www.svplaser.com), [www.multicnc.in](http://www.multicnc.in)



**S** - Service  
**V** - Value  
**P** - Precision